

DECLARATION OF PERFORMANCE

DoP number: 12109210-B1W1210

Product name:

WASHINGTON RED MULTI

Identification code of product-type is DoP-number



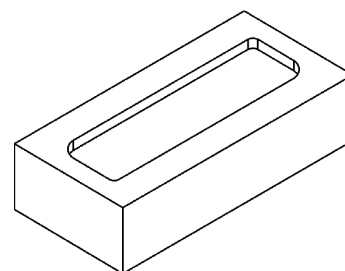
Wienerberger NV
Kapel ter Bede 121 - 8500 Kortrijk
Belgium

Intended use in masonry walls, columns and partitions for:
Assessment and verification of constancy of performance:
Harmonised standard:
Notified body/ies:

unprotected masonry
System 2+
EN 771-1:2011+A1:2015
0749

Declared performance/s of a U - masonry unit

Dimensions and tolerances			T1	R1
Length:	mm	215	± 6	9
Width:	mm	102	± 4	6
Height:	mm	65	± 3	5
Tolerance:	category	T1		
Range:	category	R1		
Flatness of bed faces:	mm	NPD		
Plane parallelism:	mm	NPD		
Configuration				
Group of the unit:	-	1		
Volume of all formed voids:	%	NPD		
Volume of frogs:	%	< 20		
Density				
Gross dry density:	kg/m ³	1650		
Net dry density:	kg/m ³	1800		
Tolerance:	category / %	D1 / 10		
Compressive strength for Category I product				
Perpendicular to bedface:	N/mm ²	10		
Perpendicular to header:	N/mm ²	NPD		
Perpendicular to header 2:	N/mm ²	NPD		
Bond strength:	N/mm ²	NPD		
Thermal conductivity λ _{10,dry,unit} :	W/(m·K)	0,690	Determination method EN 1745:2020: S1	
Water vapour permeability:	-	μ = 5/10	Tabulated min. and max. value according EN 1745	
Durability:	category	F2		
Water absorption:	%	13		
Initial rate of water absorption:	kg/(m ² ·min)	1-5		
Active soluble salt content:	category	S2		
Moisture movement:	mm/m	NPD		
Reaction to fire:	class	A1		
Dangerous substances:	-	NPD		



actual configuration may vary slightly

The performance of the product identified above is in conformity with the set of declared performance/s. This declaration of performance is issued, in accordance with Regulation (EU) No 305/2011, under the sole responsibility of the manufacturer identified above.

Signed for and on behalf of the manufacturer by:

2018-07-01 CEO Caroline Van De Velde

Wienerberger NV
Kapel ter Bede 121 - 8500 Kortrijk
Belgium